

Role of Intelligence in Administration

13 November, 2024
Dr MCRHRD

B. Shivadhar Reddy, IPS
*Director General,
Intelligence Department,
Telangana State*

What is Intelligence?

- **Intelligence – a product resulting from**
 - **collection**
 - **collation**
 - **evaluation**
 - **analysis**
 - **integration**
 - **interpretation**
- **Dissemination of the produced intel to users for planning, requirements and direction.**

- **The State shall secure a social order for the promotion of welfare of the people.**
 - **Art 38 (Part IV of the Constitution of India - Directive Principles of State Policy)**

“Intelligence Department is the eyes and ears of the Government.”

FUNCTIONS OF INTELLIGENCE



- **Intel Dept keeps CM, CS, DGP informed of**
 - ✓ **all imp pol developments & related activities, pol violence**
 - ✓ **regional issues/tensions**
 - ✓ **caste organisations**
 - ✓ **communal tensions/riots**
 - ✓ **student activities**
 - ✓ **farmer issues**
 - ✓ **trade union/labour activities**
 - ✓ **developmental intel**
 - ✓ **undertakes confidential & top secret enquiries**

- **Developmental services are broadly classified into two categories**
 - (i) economic services**
 - (ii) social and community services.**

Collection & dissemination of intel on developmental services is called as developmental intelligence.

- **Economic services mainly consist of**
 - **irrigation & CAD**
 - **drainage**
 - **flood control**
 - **devt of roads & transport**
 - **civil supplies**
 - **agriculture, horticulture**
 - **dairy, animal husbandry & live stock & fisheries devt**
 - **rural devt organised through different progs**
 - **mining and quarrying**
 - **forest devt**
 - **power devt**
 - **devt of industry, commerce, etc.**

• **Social and community services comprise**

- **education**
- **sports**
- **arts & culture**
- **health & family welfare**
- **water supply & sanitation**
- **housing**
- **urban devt**
- **welfare of SC, ST & BCs**
- **woman & child welfare**
- **labour welfare & employment**
- **nutrition**
- **information & broadcasting**
- **relief & rehabilitation, etc**

- **The scope of developmental intel is appraisal of various projects & progs/schemes involving**
 - heavy expenditure
 - large scale loss of revenue to the govt
 - misappropriation of public funds
 - corruption
 - nepotism
 - favoritism
 - inefficiency
 - serious official misconduct, etc.

- **Analysis** of reasons for the failure of progs & methods adopted by various vested interests in sabotaging & manipulating systems
- **Focus** on areas where benefits of developmental progs are not reaching target groups
- **Focus** on pressing problems of different areas/social groups causing serious hardship & disturbance
- **Focus** on lop-sided devt, denial of developmental benefits, delay & irregular implementation of developmental schemes leading to I&o problems

- **Agrarian problems (shortages of fertilisers & seeds, MSP to agricultural produce, etc) problems of labour, students, employees, minorities, SC, ST, BCs etc**
- **Take to the notice of administration for remedial measures**

- **Conducts antecedent verification of candidates selected for Central/State Services jobs**
- **Verification of applications for Passports/Visa/NORIs/NOCs and NGOs, etc.**

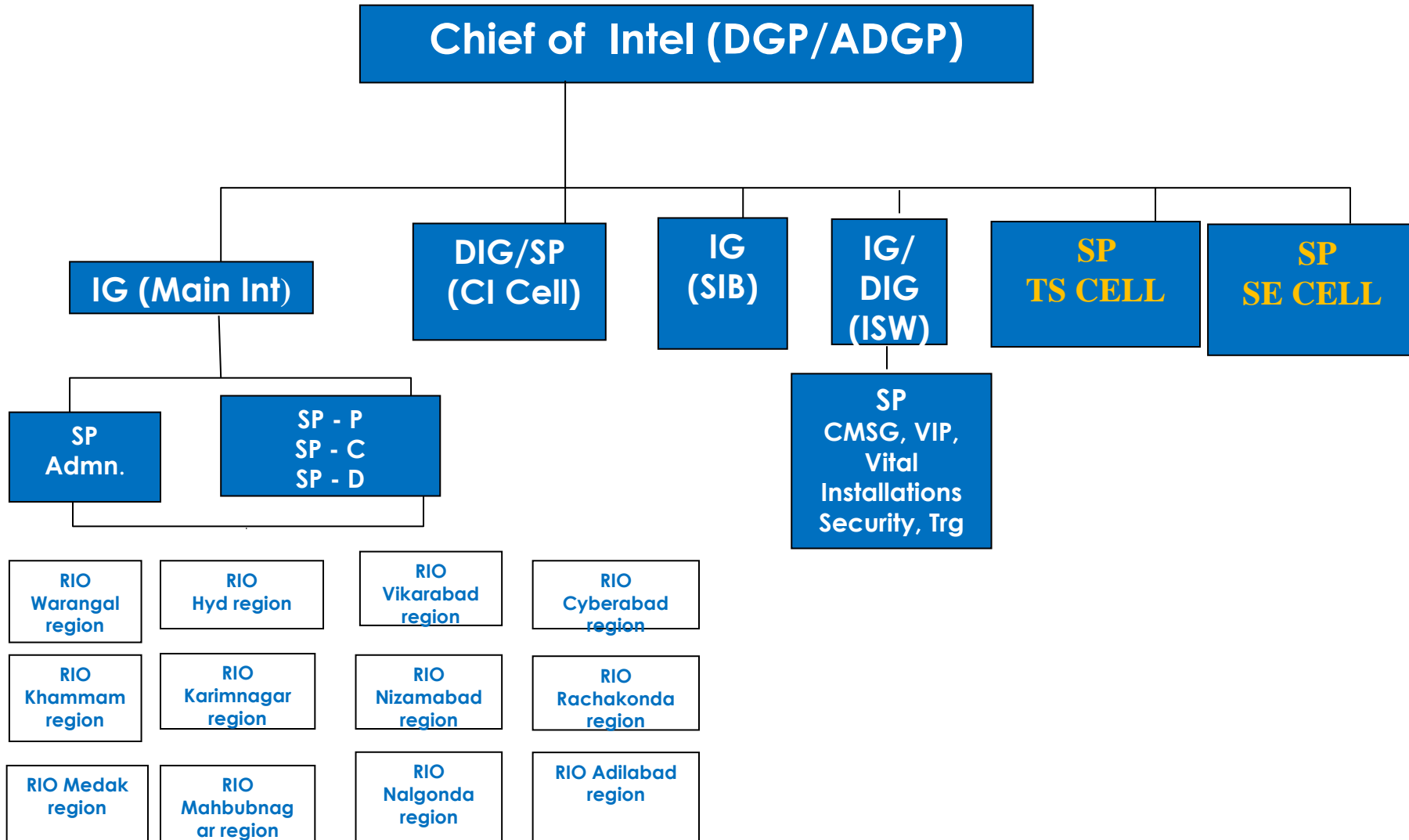
- Intel Dept functions on the pattern of Intelligence Bureau (IB). It has four main branches

- 1) Main Intelligence
- 2) Special Intelligence Branch (SIB)
- 3) Counter Intelligence (CIC) &
- 4) Intelligence Security Wing (ISW)

...and two sub-branches

- 1) TS Cell
- 2) SE Cell

INTELLIGENCE DEPT



Chief of Intel

CI Cell (DIG/SP)

- i. Activities of ISI, ISIS, various terrorist modules.**
- ii. Communal tensions, religious fundamentalist organizations**
- iii. Drugs/narcotics**

```
graph TD; A[Chief of Intel] --- B[SIB (IG)]; B --- C[Left wing extremism, Maoists and other groups];
```

Chief of Intel

SIB (IG)

Left wing extremism, Maoists and other groups

DGP, Int

DIG, ISW

- **VIP and industrial Security**
- **Private Security Agencies**
- **Bomb Disposal**

INTELLIGENCE SECURITY WING (ISW)

- **nodal agency for all security related matters in the State.**
- **performs both Executive & advisory roles in matters of security.**

EXECUTIVE

- Procurement of security equipment, sniffer dogs, BP vehicles...
- Setting up of DSWs
- Monitoring of PSO deployment/rotation/trng of security personnel at unit level

ADVISORY

- Coordinating VIP visits all over the state and fixing security categorisation
- Advising units on VIP, Industrial, Aviation security matters
- Alerts

Bomb Disposal Squad

- A trained contingent of SW - identification & neutralisation of landmines, explosives, IEDs, etc.
- Conducting anti-sabotage checks.

Sniffer Dog Squad

- A sniffer dog squad trained in scenting planted explosives
- They attend all progs of VVIPs/VIPs, foreign dignitaries, protectees.

Anti-Drone attack initiatives

- New challenges

...ISW

- **VIP and industrial Security.**
- **ISW conducts certain highly specialized trg progs for**
 - **detection and disposal of bombs/EDs**
 - **VVIP/VIP**
 - **orientation progs in LWE & terrorism to State police incl OCTOPUS and Greyhounds & to officers & men of other States & CPOs at IITA**

General Intelligence

- **There are 12 Regional Offices-headed by RIOs**
 1. **Hyderabad** (Hyderabad City)
 2. **Cyberabad** (Ranga Reddy part, Medchal Malkajgiri part, Vikarabad part)
 3. **Rachakonda** (Yadadri Bhuvangiri, Ragareddy part, Medchal Malkajgiri part)
 4. **Mahbubnagar** (J.Gadwal, Mahbubnagar, Nagarkurnool, Wanaparthy)
 5. **Vikarabad** (Vikarabad, Narayanpet)
 6. **Nizamabad** (Nizamabad, Kamareddy)
 7. **Medak** (Medak, Siddipet, Sangareddy,)
 8. **Khammam** (Khammam, B.Kothagudem)
 9. **Adilabad** (Adilabad, Nirmal, Mancherial, KB Asifabad)
 10. **Karimnagar** (Karimnagar, R.Sircilla, Peddapalli , Jagtial)
 11. **Nalgonda** (Nalgonda, Suryapet)
 12. **Warangal** (Warangal , Hanumoknda, Jangaon , JS Bhupalpally, Mulugu, Mahbubabad)

- **SsP (NC)/Addl.Ss.P heads the Regional Intelligence Offices while the Zonal offices are headed by a DSP besides other sub-ordinate ranks of executive staff i.e. Insprs/ SIs/HCs/PCs.**
- **Each Regional Officer supervises the work of 3-4 Zonal DSsP and sub-ordinate staff.**



Thank You